



wsp

Wadsworth Security Products

The WSP System

Masterkeying is a way of coding a system of locks to give authorised personnel access to a series of locks to which they have authority to enter without the need for them to carry more than one key.

The illustration shown is a simple system where the Grand Master Key (GM) will allow access to all the locks in the system.

The master keys will only allow access to the locks in their particular part of the system.

Submaster keys have been provided which in this case will probably mean separate departments under an overall departmental head (e.g. Sales and marketing departments under an overall Sales Director).

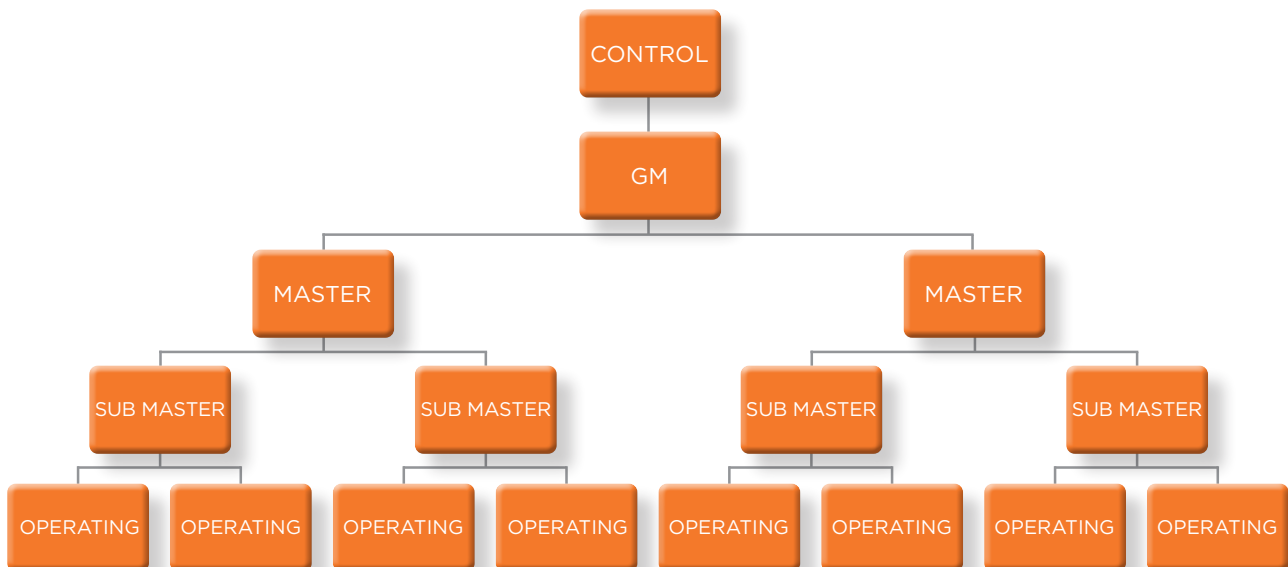
Individual locks in each particular section will have keys which are common only to one particular lock.

Master keying can be as simple or as complex as required. The hierarchy diagram below is a basic Master key system. We can add Subsubmasters,

Janitor keys, reverse suited cores and more.

Each Masterkey system is designed individually to suit our customers needs.

Wadsworth offers a masterkey system that uses interchangeable cores to maintain the systems security. This is accomplished by the use of a special key called a control key which when inserted into the lock removes the core from its housing. Since the core contains all the pin tumblers, it is the core that determines what key(s) will operate the lock. If the control key is used to remove a core from its housing and then a different core is installed in the housing, this will have changed the combination on which that lock will operate.





Rim Cylinder

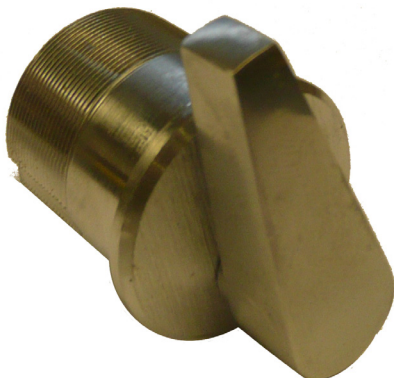
Machined from solid bar stock and available in satin brass and satin chrome finishes. This cylinder is used in standard rim cylinder applications and is interchangeable with most other manufacturer's rim locks.

1E72

Mortice Cylinder

Machined from solid bar stock and available in Satin brass and satin chrome finishes. This cylinder is used in standard, screw-in cylinder mortice applications. Will function with many other manufacturer's locks by use of different cams and cylinder rings (call us for advice). Additional cylinder security is provided by a set screw that mounts diagonally in the cylinder wall and, when tightened, holds the cylinder securely in the housing.

1E76



Mortice Thumbturn

Machined from solid bar stock and available in Satin brass and satin chrome finishes. This thumbturn is used in standard, screw-in cylinder applications. Will function with many other manufacturer's locks by use of different cams and cylinder rings (call us for advice).

1E7A4

Note: Please contact the sales office for advice on the correct cam required for the lockcase in use. Other finishes are available on request.

Oval Profile Cylinders



8E7H5

Keyed on one side only
42.5mm



8E7H6

Keyed on both sides
42.5mm / 42.5mm



8E7H7

Keyed on one side with a
thumbturn on the inside
42.5mm / 42.5mm



8E7H8

Keyed on one side with a special turnbar inside,
for particular use by the aged or handicapped
42.5mm / 42.5mm

Available in satin chrome and polished brass. Special finishes available on request

Scandinavian Cylinders



8E7A5

Keyed on one side only
39mm



8E7A6

Keyed on both sides
39mm / 39mm



8E7E4

Keyed on one side only
43mm / 10mm



8E7E5

Keyed on both sides
43mm / 43mm



8E7E6

Keyed on one side with a thumbturn
on the inside
T42mm / K45mm



8E7E6-TB

Keyed on one side with a special turnbar
inside, for particular use by the aged
or handicapped
T42mm / K45mm

Cylinders are available in a range of special lengths and offsets. Contact us for more information

Classroom Cylinders



8E7H7-CR

For use with a UK oval lock case. The lock
case can be locked or unlocked by key from
the outside but can only be unlocked by
thumbturn from inside, not locked
T42.5mm / K42.5mm



8E7E6-CR

For use with a euro profile lock case. The lock
case can be locked or unlocked by key from
the outside but can only be unlocked by
thumbturn from inside, not locked
T42mm / K45mm

Available in satin chrome and polished brass. Special finishes available on request

WSP Lock Cases



Mortice Deadlock

Case Depth:	63mm / 76mm / 101mm
Case Height:	108mm
Case Thickness:	14mm
Backset:	45mm / 57mm / 82mm

WSP1



Mortice Sashlock

Case Depth:	63mm / 76mm / 101mm
Case Height:	108mm
Case Thickness:	14mm
Backset:	45mm / 57mm / 82mm

WSP2



Mortice Deadlocking Latch

Case Depth:	76mm
Case Height:	108mm
Case Thickness:	14mm
Backset:	57mm

WSP3 DL

Note: Other lock cases available on request

Nightlatch



60mm backset as standard.

Available in 40mm and in various finishes, SCP as standard.

Escutcheons



Escutcheon	Cylinder Pull
ESC01 - Oval Profile Escutcheon	RCP1000 - Rim Cylinder Pull
ESC04 - Euro Profile Escutcheon	OCP1000 - Oval Cylinder Pull
ESC05 - Euro Adapted Escutcheon	ECP1000 - Euro Cylinder Pull
<i>N.B. For use with legacy cores</i>	

Lever Handles

(19mm round bar as standard)



89/11 (Aluminium)	304 (Stainless Steel)
B - Blank	B - Blank
E - Euro Profile	E - Euro Profile
U - Oval Profile	U - Oval Profile
I - Indicator (Bathroom/WC)	I - Indicator (Bathroom/WC)

Padlocks



Shackle Diameter	Core Housing	Shackle Code	Function	Options
11B (1/4" / 6.3mm)	7 - 7 pin housing all WSP cores	2 (3/4" / 19mm)	T - key retained	M3 Chain (13 1/2" / 34cm) WC Weather Cover
21B (5/16" / 7.9mm)		22 (1 1/2" / 38mm)	L - Non-key retained	
41B (3/8" / 9.5mm)		72 (2" / 50mm) 82 (4" / 101mm)		



European Graded Padlock

SS50/SFIC (CEN4)	SS50/2.5/SFIC (CEN4)	SS50C/SFIC (CEN4)
Width: 50mm Clearance Width (HSC): 22mm Clearance Height (VSC): 26mm Shackle Diameter: 10mm Depth: 26mm	Width: 50mm Clearance Width (HSC): 22mm Clearance Height (VSC): 64mm Shackle Diameter: 10mm Depth: 26mm	Width: 50mm Clearance Width (HSC): 16mm Clearance Height (VSC): 16mm Shackle Diameter: 10mm Depth: 26mm
SS65/SFIC (CEN5)	SS65/2.5/SFIC (CEN5)	SS65C/SFIC (CEN6)
Width: 65mm Clearance Width (HSC): 29mm Clearance Height (VSC): 29mm Shackle Diameter: 12.7mm Depth: 31.8mm	Width: 65mm Clearance Width (HSC): 29mm Clearance Height (VSC): 64mm Shackle Diameter: 12.7mm Depth: 31.8mm	Width: 65mm Clearance Width (HSC): 19mm Clearance Height (VSC): 19mm Shackle Diameter: 12.7mm Depth: 31.8mm



Container Padlock

BL600	BL850	BL1100	2173-IC
Width: 50mm Clearance Depth: 16.5mm Clearance Height: 15.2mm Shackle Diameter: 10.4mm Depth: 25mm	Width: 50mm Clearance Depth: 16.5mm Clearance Height: 21.6mm Shackle Diameter: 10.4mm Depth: 25mm	Width: 50mm Clearance Depth: 16.5mm Clearance Height: 27.6mm Shackle Diameter: 10.4mm Depth: 25mm	Diameter: 73mm Clearance Depth: 44.4mm Clearance Height: ** Shackle Diameter: 10.4mm Depth: 38mm (Hasp also available)

1. Simple installation; self-aligning and reversible
2. May be keyed into existing WSP masterkeyed system
3. The original interchangeable core permits instant, economical re-lock

Series	Backset	Function Code
TDB1		KT - Thumbturn
TDB2	6 - 2 3/8" (60mm)	KK - Double Keyed
TDB3	7 - 2 3/4" (70mm)	CR - Classroom
TDB4		SN - Keyed One Side



Function	Deadbolt operated by:
1 - Thumbturn 	<ul style="list-style-type: none"> • Turning the key in the outside cylinder, OR • Turning the inside turn lever
3 - Classroom 	<ul style="list-style-type: none"> • Turning the key in the outside OR • Turning the inside turn lever only retracts the deadbolt <p><i>Note: Can't throw the deadbolt from inside</i></p>

Function	Deadbolt operated by:
2 - Double Cylinder 	<ul style="list-style-type: none"> • Turning the key in the inside or outside cylinder
4 - One way deadbolt 	<ul style="list-style-type: none"> • Turning the key in the outside cylinder; the inside cylinder is blank

Cylindrical locksets

How to order sample:

9K	3	7	AB	15	A	STK	626
Series	Backset	Core Housing	Function Code	Lever/Knob Style	Rose Style	Strike Package	Finish
6K - Medium Duty Knob 7K - Medium Duty Lever 8K - Heavy Duty Knob 9K - Heavy Duty Lever	2 - 2 3/8" (60mm) 6K & 7K only 3 - 2 3/4" (70mm) 4 - 3 3/4" (101mm) 5 - 5" (127mm)	0 - Keyless 7 - 7-pin housing accepts all cores	AB - Entrance D - Storeroom R - Classroom	4 - Round Knob 6 - Tulip Knob 14 - Curved Return 15 - Contour angle return	A - Large Round C - Small Round	STK - Standard S3 - High Security	606 - Satin Brass 626 - Satin Chrome

Function	Description	Outside Lever		Inside Lever	
	Latch operated by	Locked by	Unlocked by	Locked by	Unlocked by
AB - Entrance 	<ul style="list-style-type: none"> • Rotating the inside lever OR • Rotating the outside lever - only when the inside push button is out OR • Turning the key in the outside lever 	<ul style="list-style-type: none"> • Pushing the inside button OR • Pushing and turning the inside button. Turning the button keeps the outside lever locked until the button is turned back 	Turning the key in the outside lever (only when the button is not turned) OR Closing the door (only when the button is not turned)	Cannot be locked	Always unlocked
D - Storeroom 	<ul style="list-style-type: none"> • Turning the Key in the outside lever OR • Rotating the inside lever 	• Always fixed	Cannot be unlocked	Cannot be locked	Always unlocked
R - Classroom 	<ul style="list-style-type: none"> • Rotating the inside lever OR • Turning the key in the outside lever OR • Rotating the outside lever when not locked by key 	Turning the key in the outside lever	Turning the key in the outside lever	Cannot be locked	Always unlocked

Note: Other functions are available. Please contact the sales office for more information



Code Lock

Heavy duty code lock for the toughest applications. Key override option is available on all units as standard for emergency access. This is a retro-fit unit to easily replace Simplex Unican 1000 series. 12 position keypad with audio and visual feedback. Standard battery pack will last a minimum of 65,000 cycles or 2-5 years, with an optional extended battery pack to yield twice as much as standard. Fully weather resistant for both indoor and outdoor applications.

Pin length can be varied between 3-6 digits, with a maximum of 50 individual users. All programming is through the keypad. 1 administrator PIN and 5 supervisor PINS are available.

Keypad EZ

Cabinet Locks

Cabinet lock to accept a removable core. Available in mortice and rim, with either a latchbolt or deadbolt.

5L



1W Electric Switch Locks

A range of electric switch locks available in various 'on-off' and momentary keyed switch functions. Circuit variations are available in single, double and triple pole.

1W



Key Combinator

The key combinator is used to cut new or additional keys when required. WSP keys are cut in accordance with the original masterkeyed code with no reliance on a pattern key. As a result, inaccurate tolerances are not introduced into and compounded within the system as second, third and fourth generation keys are cut. Note: Key combinator is available for standard, premium, or Peaks systems.

AD433

Combining Kit

This small desk-drawer size kit contains everything necessary to combine a WSP core. It includes a complete selection of pin segments, springs, caps, a capping block, two capping pins, an ejector pin, tweezers, two standard keys and a key gauge. When securely closed, the kit may be carried in any position without mixing contents. Kits can be ordered separately or combined (1C core) & (5E cylinder).

CD431



Wadsworth Security Products Ltd.

A Division of G.S. Christopher & Co Ltd

Unit 1, Epsom Downs Metro Centre
Waterfield, Tadworth, Surrey
KT20 5EZ, UK
+44 (0)1737 360512
sales@wadsworthsecurity.co.uk
Company Registration 1553769